

Residence

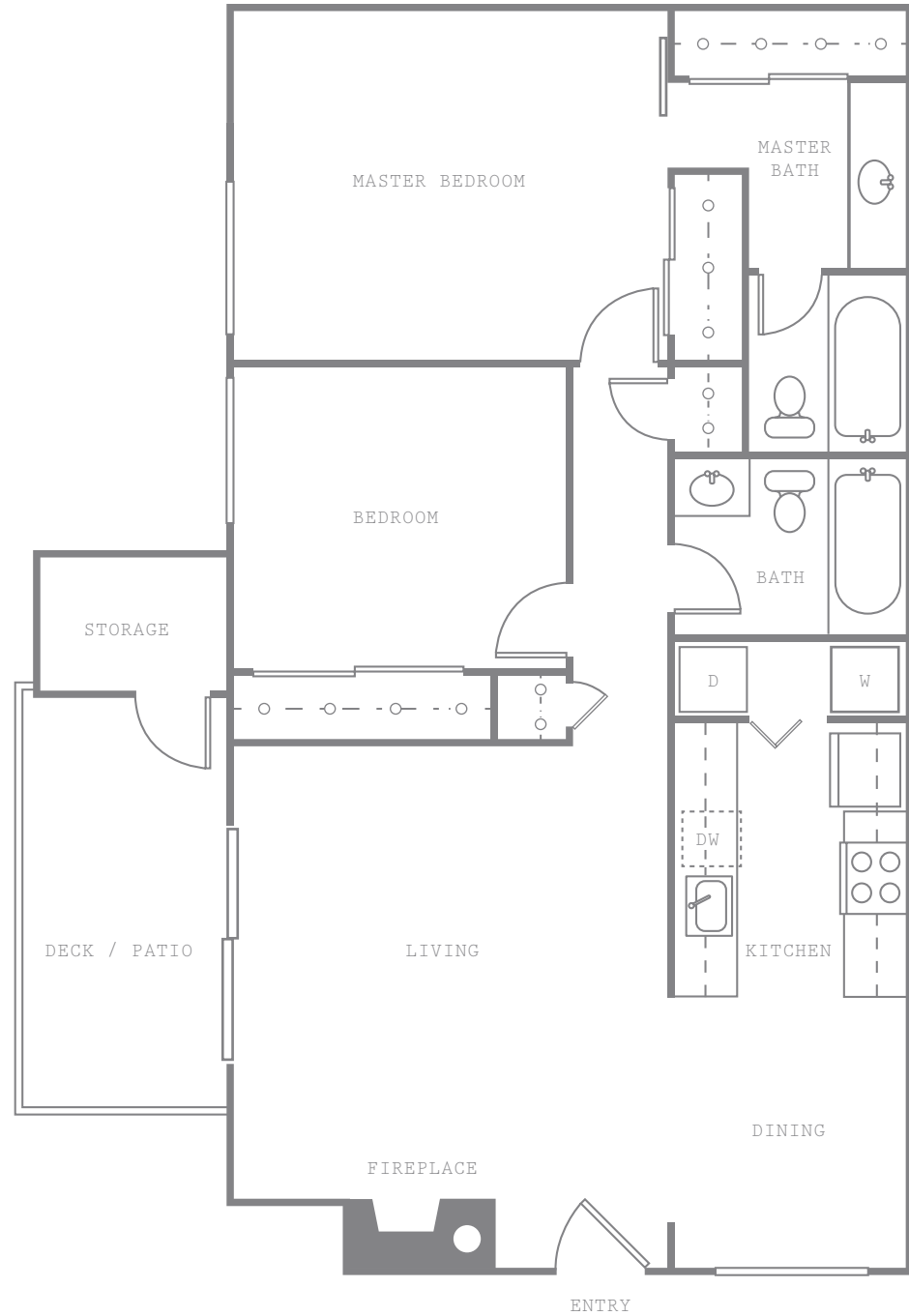
C


2-bed / 2-bath

THE COVE

ONE SCHOONER COURT
RICHMOND CA 94804

510-215-1600
INFO@THECOVECA.COM
THECOVECA.COM



 PLAN NOT TO SCALE. Sales and Marketing by Polaris Pacific — a California, Arizona, Colorado, Hawaii, Oregon and Washington licensed broker. CA BRE #01499250. Prospective purchasers should engage a licensed professional to determine actual unit sizes. Floor plans, floor plates, elevations, renderings, features, finishes and specifications are subject to change at any time and should not be relied upon as exact representations, express or implied. The developer reserves the right to change floor plans, floor plates, elevations, features, finishes and specifications at any time, without prior notice.